

CARNAHAN · PROCTOR · CROSS, INC.

CONSULTING ENGINEERS · SURVEYORS · PLANNERS

6101 WEST ATLANTIC BOULEVARD, MARGATE, FLORIDA 33063
PHONE: 954-972-3959 FAX: 954-972-4178

AUGUST 2002

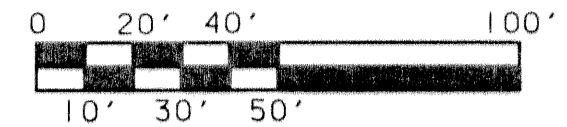
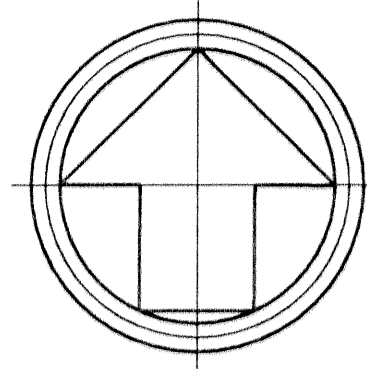
991010

JJM

ANTHONY GROVES P.U.D.

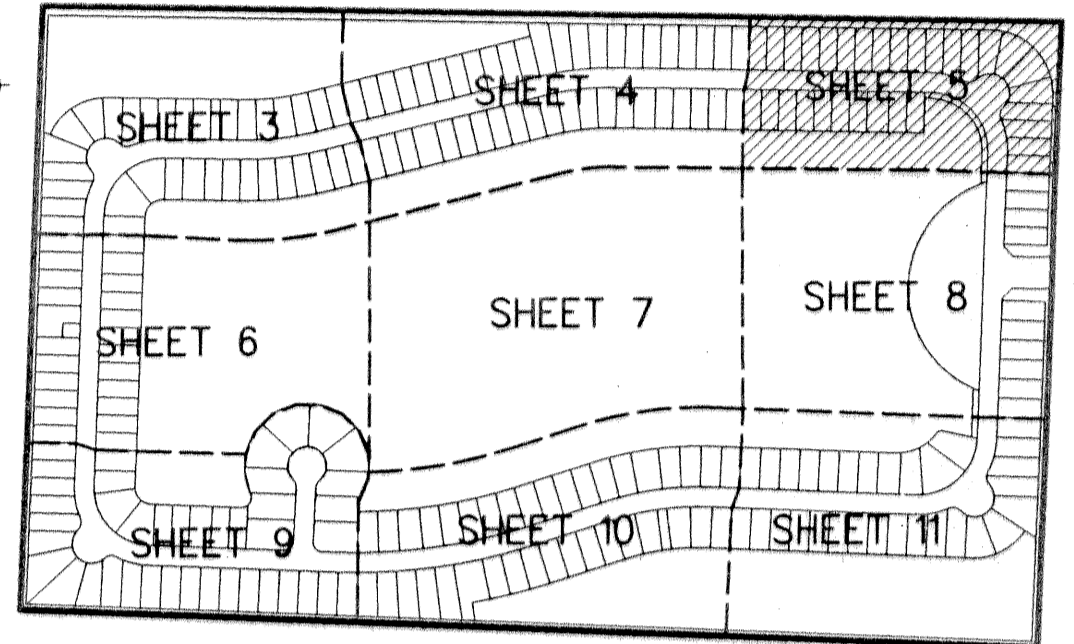
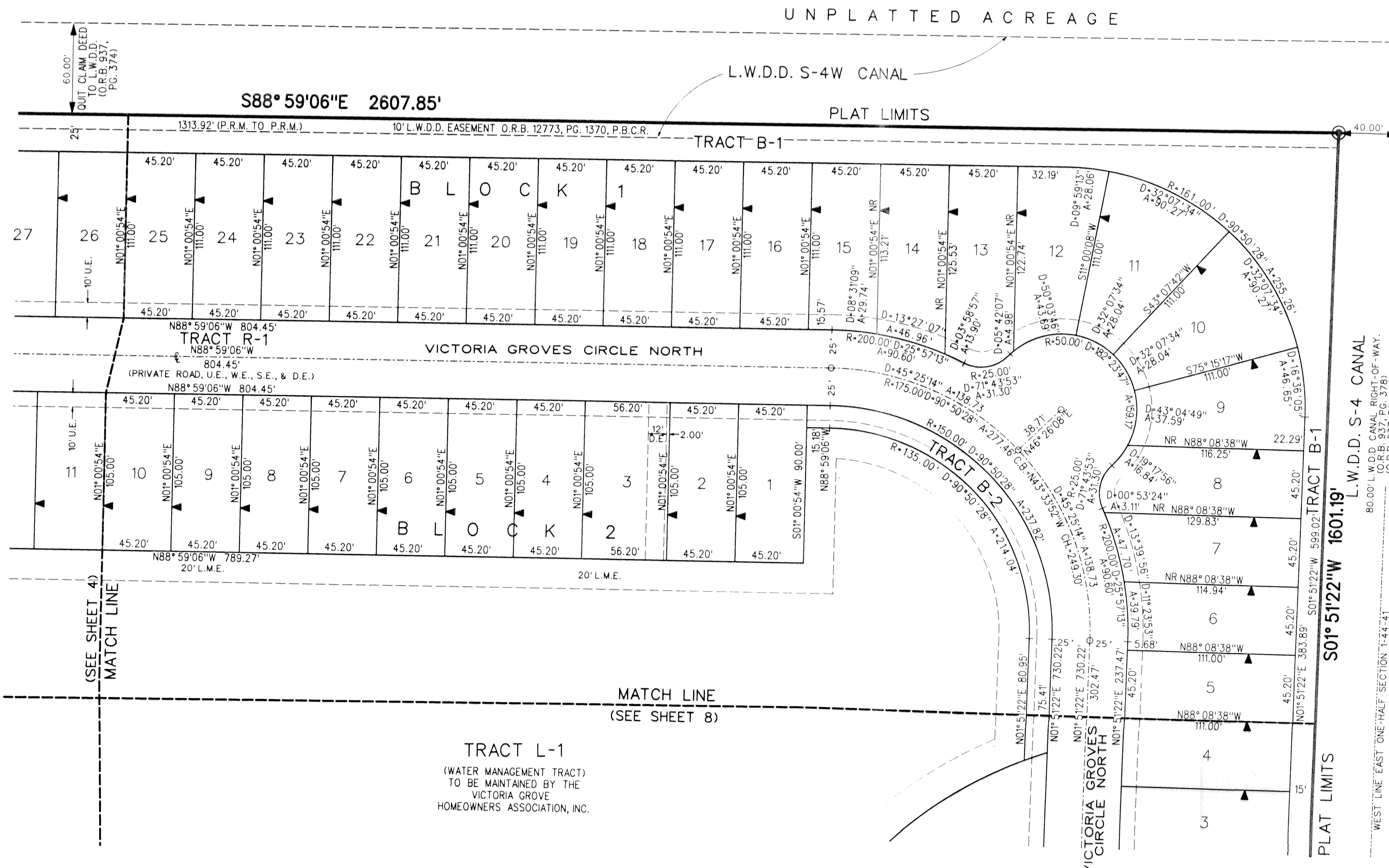
ANTHONY GROVES PHASE 2

A PORTION OF SECTION 1, TOWNSHIP 44 SOUTH, RANGE 41 EAST,
VILLAGE OF ROYAL PALM BEACH, PALM BEACH COUNTY, FLORIDA



SCALE: 1"=40'

SHEET 5 OF 11



KEY MAP
N.T.S.

ANTHONY GROVES PHASE
(P.B. 93, PGS. 40-52, P.B.C.R.)

- LEGEND:**
- SET PERMANENT REFERENCE MONUMENT (P.R.M.) • LB2936 UNLESS OTHERWISE NOTED
 - PERMANENT CONTROL POINT (P.C.P.)
 - ▲ ZERO LOT SIDE
 - CENTERLINE
 - ARC LENGTH
 - CHORD
 - CHORD BEARING
 - DELTA (CENTRAL ANGLE)
 - DRAINAGE EASEMENT
 - L.A.E. LIMITED ACCESS EASEMENT
 - L.M.A.E. LAKE MAINTENANCE ACCESS EASEMENT
 - L.M.E. LAKE MAINTENANCE EASEMENT
 - L.S.E. LIFT STATION EASEMENT
 - L.W.D.D. LAKE WORTH DRAINAGE DISTRICT
 - N.R. NON-RADIAL
 - O.R.B. OFFICIAL RECORDS BOOK
 - PAGE
 - P.B. PLAT BOOK
 - P.B.C.R. PALM BEACH COUNTY RECORDS
 - P.O.B. POINT OF BEGINNING
 - P.O.C. POINT OF COMMENCEMENT
 - P.U.D. PLANNED UNIT DEVELOPMENT
 - R RADIUS
 - R/W RIGHT-OF-WAY
 - SE SEWER EASEMENT
 - SF SQUARE FEET
 - U.E. UTILITY EASEMENT

TRACT L-1
(WATER MANAGEMENT TRACT)
TO BE MAINTAINED BY THE
VICTORIA GROVE
HOMEOWNERS ASSOCIATION, INC.

L.W.D.D. S-4 CANAL
80.00' L.W.D.D. CANAL RIGHT-OF-WAY.
(O.R.B. 937, PG. 378)
(O.R.B. 937, PG. 379)
(O.R.B. 937, PG. 382)
QUIT CLAIM DEED TO L.W.D.D.
(O.R.B. 937, PG. 376)

WEST LINE EAST ONE-HALF SECTION 1-44-741
501° 51'22" W 599.02' TRACT B-1
501° 51'22" W 1601.19'
L.W.D.D. S-4 CANAL

(SEE SHEET 4)
MATCH LINE

MATCH LINE
(SEE SHEET 8)

UNPLATTED ACREAGE

L.W.D.D. S-4W CANAL

PLAT LIMITS

TRACT B-1

VICTORIA GROVES CIRCLE NORTH

TRACT B-2

VICTORIA GROVES CIRCLE NORTH

PLAT LIMITS